

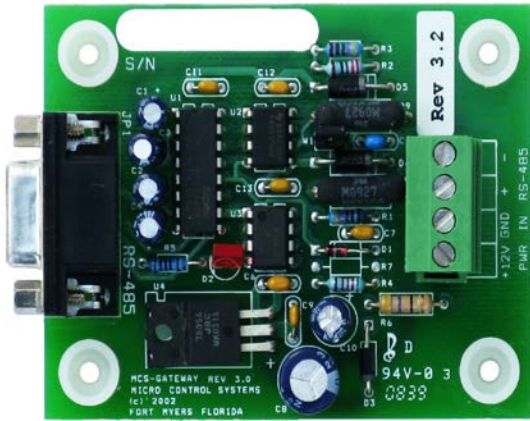


The MODEM-MAG-230

Description & Specifications



Part # **MODEM-MAG-230**



Part# **MCS-485-GATEWAY**

Specifications

MODEM:

Dimensions..... 6"w, 1.22"h, 4.72"d
 Data V.90, V.34, V.32bis, V.32
 V.22bis, V.22, V.23, V.21
 Bell 103/212
 Error Control V.42, MNP2-4
 Data Compression..... V.42bis, MNP5
 Indicators 9 LED status indicators:
 PWR Power On
 TD Transmit Data
 RD Receive Data
 OH Off Hook
 CD Carrier Detect
 TR Terminal Ready
 AA Auto Answer
 56K V.90 or V.92 mode
 V34 V.34 mode

Phone Interface Standard (RJ-11) telephone
 jacks for telephone and line
 connections

MCS-485-GATEWAY:

Package Dimensions:
 Width 2.50"
 Length..... 3.47"
 Height 1.04"
 Mounting Holes..... 4 holes using #6 screws
 through nylon collars at
 corners of board
 RS-485 Connection 4 pole 5mm removable
 connector block with +12V, GND,
 RS-485 (+) & RS-485 (-)
 RS-232 Connection 9 pin female Sub-D
 Baud Rate (Standard)..... 19,200 baud
 Power Required..... 60mA @ 12vdc
 Operating Temperature..... -40°F to +175°F
 (-40°C to +80°C)
 Storage Temperature..... -40°F to +175°F
 (-40°C to +80°C)

Supplied Accessories AC Adapter, MCS-Surge Protector
 MCS-M9-M25 cable
 RJ-11 phone cable
 4 wire shielded cable
 Wiring Guide

Option

-11590 to 264vac input power @
 47 to 63Hz

Description

The **MODEM-MAG-230** is part of the hardware for the MCS Support System. Located on-site, its purpose is to provide a means for remote communication with MCS micro controllers, either stand-alone or as part of a network.

By using **MCS-CONNECT** software you can dial out from your PC and into the MODEM-MAG which, once it answers, will connect you with a MCS micro controller. Once connected, you can interact with the micro controller in real time. The supplied **MCS-M9-M25** cable connects the MODEM-MAG-230 directly to a MCS Controller.

The MODEM-MAG is pre-programmed at MCS for use with MCS Controllers.

Package Includes an **MCS-485-GATEWAY**.

The MCS-485-GATEWAY is a communications bridge between the signal levels and protocols of RS-485 and RS-232. It is primarily intended for establishing half-duplex, 2-wire communication between MCS micro controllers and a local PC, MODEM-MAG-230 or MCS-ETHERNET, either stand alone or as part of a network.